



# LIVING COLOR

Designer Jackie Armour creates a personality-filled family home that's as playful and fun as it is stylish.

Story by Jean Nayar | Photography by Brantley Photography

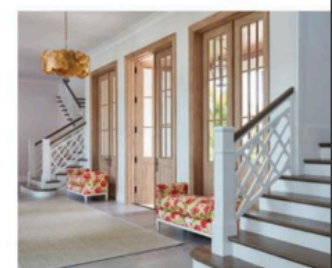




From the moment interior designer Jackie Armour met the owners of this new home in Jupiter, Florida, she knew their working relationship was meant to be. "I'm all about color and pattern on a personal level," says Jackie, the principal of JMA Design, which has offices in Palm Beach, Jupiter and New York. "The wife immediately made it clear that she really loves color, but when she pulled out a Lee Jofa fabric sample designed by the American painter Hunt Slonem, it was like kismet. I collect his art and had just ordered a bunch of samples of his fabric designs myself. We hit it off immediately."

The homeowners had recently moved from New York to Florida to raise their three young children closer to their grandparents, who also live in the area. To reinforce the active, indoor-outdoor lifestyle the couple craved, they purchased a one-acre lot along the scenic Loxahatchee River in Jupiter and set out to build the family-friendly home of their dreams. They began by enlisting Dan Reedy of Jupiter-based Onshore Construction to build the home, and he recommended Jackie to design the interiors before construction got underway. As a result, she was able to collaborate not only with the builder, but also with the architect, Brian Collins of Boca Raton-based Affiniti Architects, and the landscape architect, John





Lang of Lake Worth-based Lang Design Group, to help craft the interior layout from the inside out. "Being involved from the beginning allowed me to be heavily involved in shaping the interior architecture," Jackie explains. "I created all the interior elevations and developed all the millwork profiles during the design phase."

Collaborating closely, the team designed the 8,500-square-foot, five-bedroom home in an updated classic British Colonial style that ideally suits its South Florida waterfront environs. While classically inspired elements—such as a triple set of double cypress entry doors, white-painted millwork and columns, wooden brackets and ceiling beams, and a pair of dramatic staircases—contribute to the character-rich backdrop, a mix of comfy furnishings, artful accents, and vibrant colors and patterns enliven the traditionally inspired interiors with fresh notes of contrast. "The wife has a fun personality and didn't want the house to be too serious, even though the architecture is," says Jackie. "She was fearless about color and wanted to push the envelope, so I was like a kid in a candy store."

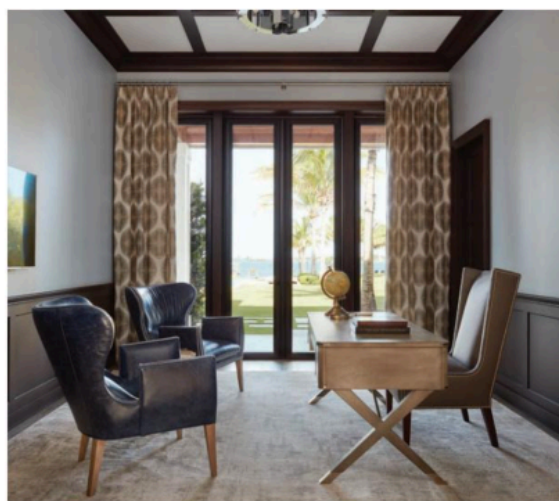
The emphasis Jackie and her client placed on color is apparent from the moment one enters the foyer, where a pair of benches upholstered in a boldly patterned fabric brimming with bright blooms flank the front doors and hint at the profusion of rainbow hues that energize the double-height living space and adjoining dining room beyond. Setting the tone in the living room are flowing curtains made from the zesty Hunt Slonem-designed fabric that initially inspired the color scheme and frame the double-height windows overlooking the spectacular





water view. While the curtain fabric precipitated the palette, the coastal setting also influenced the color scheme with a surprising twist. "Being that the house on the water in a coastal beach town, the ocean was a point of inspiration, but not in the typical ways," says the wife, who had no interest in the predictable shades of blue and sandy beige that often characterize coastal retreats. "I wanted to represent the ocean by taking color cues from the deep coral reefs. The bold, bright sea life that exists there inspires us to look for beauty in all places—even the unexpected."

Since the curtain fabric makes such a bold statement in the living and dining rooms, Jackie used some restraint and turned to softer shades for furnishings and finishes in these open spaces. "We didn't want to be over-the-top with color here, so we chose a solid fabric in a subtle pear-green hue for the sofas, and the other colors just fell into place," says Jackie. She chose to finish the double-height walls flanking the living room fireplace in a soothing, lavender-colored Venetian plaster, and upholster a pair of pretty armchairs here in a pale pink cotton velvet. She also relied on the same pastel pink fabric to cover the



chairs around the table in the adjoining dining space, which unified the open areas and established the connecting tissue from room to room.

Materials and finishes also brighten the classic backdrop with a youthful spin. "The owners suggested using polished concrete on the floor, but to avoid issues of cracking as the floor settled, we opted for a large-scale cement look-alike tile that provides a durable, low-maintenance neutral surface underfoot," says the designer. And, instead of deploying a traditional book-matching technique to install the marble mantel above the fireplace, she had slabs of travertine laid horizontally along the wall, with the veins running like shallow waves across the surface. "It gives the room a contemporary vibe and strikes a different chord that provides a nice contrast with the traditional woodwork," says Jackie. A stunning work of art by local artist Maureen Fulgenzi hangs over the fireplace as a spectacular focal point and finishing touch.

From the living room, a pop of vivid fuchsia on the walls draws the eye upward toward the upper level, beyond the custom railing that encloses the open workspace where the wife works. Beyond this simple work area, a profusion of color and pattern unfolds in the children's wing on one side of the upper level, with lollipop hues saturating the furniture, rugs and walls of play areas and bedrooms. Wallpapers patterned with butterflies, florals and tropical fronds add lively notes of surprise to the powder rooms and laundry. In contrast to these spaces, the master bedroom, bathed in a soothing





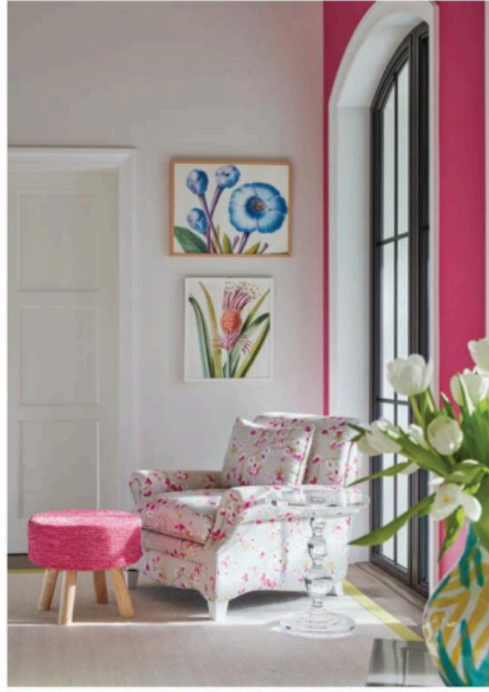
coral color on the opposite wing of the upper level, is an oasis of calm.

The family room and adjoining breakfast nook extend the livelier colors to the lower level. A turquoise hue on the walls of the family room serves as a prelude to the colors of the lawn, pool and river beyond the double doors leading to the patio outside. It also sets off the bevy of colorful cushions on the oversize sectional and trio of poufs that link the space to an adjoining breakfast nook next to the kitchen. The only vintage furnishings

the family brought with them from their former home—a bamboo bed, a pair of metal side tables and a rattan chair—were gathered together in the guest room. To connect them with the rest of the home, the designer suggested painting the tables white and the bed a periwinkle blue, and reupholstering the chair cushions in a sunny yellow fabric. “Life isn’t taken too seriously in our home, and the design we implemented definitely tells that part of our story,” says the wife. “For us, the combination of colors and patterns mimics the idea that we all have different sides to ourselves,











#### *Resources:*

**Architect:**  
*Affiniti Architects*  
 6100 Broken Sound Parkway  
 Suite 8  
 Boca Raton, Florida 33487  
 561-750-0445  
[affinitiaarchitects.com](http://affinitiaarchitects.com)

**Interior Designer:**  
*JMA Interior Design*  
 1907 Commerce Lane  
 Suite 103  
 Jupiter, Florida 33458  
 561-743-9668  
[jma-ids.com](http://jma-ids.com)

**Builder:**  
*Onshore Construction*  
 938 North Old Dixie Highway  
 Jupiter, Florida 33458  
 561-744-8331  
[onshorejupiter.com](http://onshorejupiter.com)

**Kitchen Design:**  
*S. Oscar Urreiztieta*  
*Planning and Building*  
 11199 Polo Club Road  
 Suite G  
 Wellington, Florida 33474  
 561-795-1036  
[planningandbuilding.net](http://planningandbuilding.net)

**Landscape Architect:**  
*Lang Design Group*  
 1820 2nd Avenue North  
 Lake Worth, Florida 33461  
 561.688.9996  
[landdesigngroup.com](http://landdesigngroup.com)

**Landscape Installation:**  
*Blue Water Landscape*  
 11110 SE Federal Highway  
 Hobe Sound, Florida 33455  
 772-546-7773  
[bluewaterlandscape.net](http://bluewaterlandscape.net)